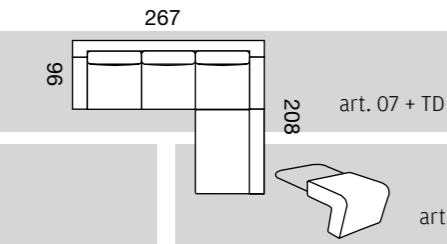
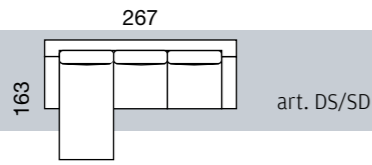
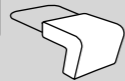


special price



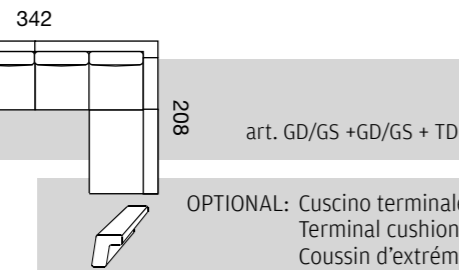
art. 18

OPTIONAL: Cuscino schienale con supporto per elem. terminale
Back cushion with support for end element
Coussin dossier a/support pour elem. term.



art. PP

OPTIONAL: Poggia piedi
Footrest
Repose-pieds



OPTIONAL: Cuscino terminale
Terminal cushion
Coussin d'extrémité art. 17



DISPONIBILI
ANCHE...
ALSO
AVAILABLE...
ÉGALEMENT
DISPONIBLE ...

Chaise longue con contenitore
Chaise longue with container
Chaise longue avec rangement



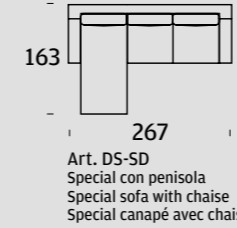
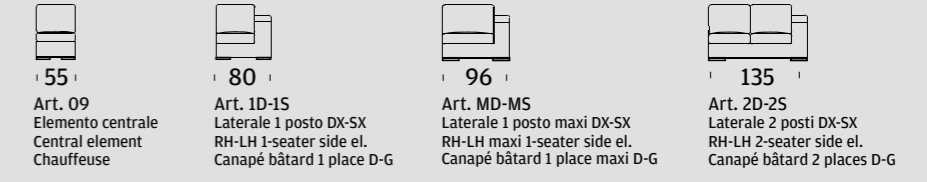
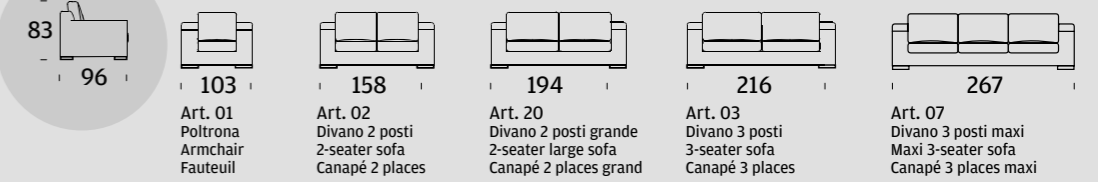
Terminale con contenitore
Terminal with container
Extrémité avec rangement



Scoprire è la capacità di lasciarsi disorientare dalle cose semplici.
Discovery is the ability to be puzzled by simple things.

Découvrir est la capacité de se laisser désorienter par des choses simples.

Noam Chomksy



art. DS-SD
Special con penisola
Special sofa with chaise
Special canapé avec chaise longue

• LISTINO PREZZI / PRICE LIST / LISTE DES PRIX pag. 299

Struttura e molleggio
Struttura realizzata con masselli portanti in legno di pioppo o abete di vari spessori. Parti di tamponamento in fibra grezza e/o compensato. Fianchi in agglomerato di legno da 18 mm. Fibra grezza e agglomerato di legno appartengono alla classe E1, pertanto a bassa emissione di formaldeide, termocoppia ad espanso e/o ovatta di fibra poliestere 100% resinata. Molleggio realizzato mediante nastri elastici da 80 mm tesi meccanicamente, composti da fili di gomma ricoperti da filo di nylon avvolto a spirale.

Imbottitura e piedi
Cuscino seduta in espanso indeformabile D30 e cuscino schienale in espanso D18, entrambi rivestiti con ovatta di fibra di poliestere da 300 g termolegata. Cuscino schienale per terminale in espanso D18 rivestito con resinato da 100 g/mq accoppiato da 3 mm e vellutino. Sagomati vari a completamento in espanso D25/40. Piede in legno finitura ciliegio, wengé e alluminio.

Structure and springs
Structure made with bearing parts in poplar or fir wood in various thicknesses. Reinforcing parts made of rough fibre and/ or plywood. Sides in 18 mm agglomerated wood chips. Rough fibre and the agglomerated wood chips are in class E1 thus with a low formaldehyde emission; thermocoupled to foam and/or 100% resinated polyester fibre wadding. Spring made with elastic bands composed of mechanically tightened rubber threads covered with nylon thread, coiled up in a spiral, 80 mm thick.

Upholstery and feet
Seat cushion in D30 non deformable foam and backrest cushion in D18 foam - both covered with 300 g of thermobonded polyester fibre wadding. Backrest cushion for terminal in D18 foam, covered with 3 mm of coupled 100 g/m2 resinat and velveteen. Various shaped elements in foam to complete with a D25/40. Wood foot with cherry, wengé and aluminium finishes.

Structure et suspension
Structure réalisée en panneaux massifs de peuplier ou de sapin de différentes épaisseurs. Éléments de remplissage en fibre brute et/ou en contreplaqué. Côtés en bois aggloméré de 18 mm. Fibre brute et bois aggloméré de classe E1, donc à basse émission de formaldéhyde, thermiquement associé à expansé et/ou à ouate 100% fibre de résine polyester. Suspension réalisée à l'aide de sangles élastiques composées de fils de caoutchouc recouverts de fil de nylon enroulé en spirale de 80 mm tendues mécaniquement.

Rembourrage et pieds
Cuscino d'assise in espanso indeformabile di D30 e cuscino di schienale in espanso di D18, tutti due rivestiti di ovatta di fibra poliestere di 300 g associata termicamente. Cuscino di schienale per elemento terminale in espanso di D18 rivestito di resina di 100 g/m2 associata a 3 mm e velluto. Diversi modelli in complemento in espanso di D25/40. Piede in legno in finitura merisier, wengé e alluminio.